

IFSC CITY RESIDENCE * New for 2011*

A modern, purpose built, city centre residence with a total of 286 single bedrooms with private bathrooms. Each apartment has kitchen facilities for self-catering. Every student has a single room & private shower, toilet, wardrobe and desk. Secure & safe location.

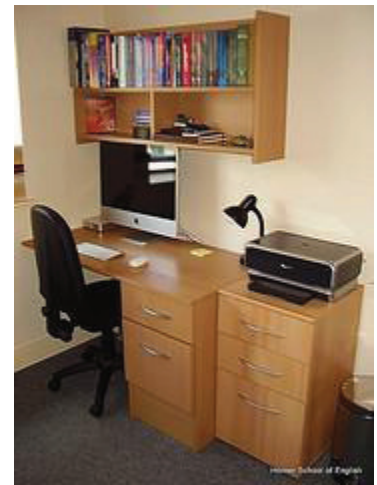
Location:

Dublin 1, Centre of Dublin – 10 minutes walk from O’Connell Bridge. 20 minutes walk to the school via the Samuel Beckett Bridge

Pricing (per bedroom): Available Mid July to 04th September

Single room with private bathroom	€ 222 per week
--	-----------------------

Apartment bookings are subject to H.S.E administration fee of EUR 51.00.



Details:

Bedrooms:	The rooms are fully equipped and are supplied with pillow and single duvet. All bed linen and hand towels are supplied and changed once per week. Bath towels are not supplied. Wired Internet connection available in each bedroom. Apartments cleaned once per week.
Bathrooms:	Each room has a private bathroom
Living Area:	Communal living room
Kitchen Area:	The kitchen contains a hob and oven, washing machine / clothes dryer, fridge, dishes and cutlery
Other:	Coffee shops and restaurants located just outside the accommodation, Marks and Spencer food market, banks, post office etc all in the immediate surrounding area
Arrival:	Accommodation office is open 24 hrs, 7 days per week.
Security Deposit:	The residence will ask for a security deposit of EUR 200 and all students should pay this fee directly to the manager of the residence within the first few days. The security deposit will be returned to the student at the end of the stay on condition that no damage has been caused to the accommodation or its property.

